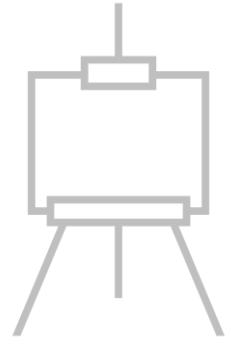




- ❖ Are you regularly manually downloading data from SKUtrak to paste into Excel reports?
- ❖ Producing weekly sales reports based on retailer sales-out data?
- ❖ Need to track daily stock & sales of specific SKUs at specific stores?
- ❖ What if you could connect SKUtrak data and order data from your ERP system, and view it in a single report?
- ❖ What is Snowflake, and ODBC?

SKUtrak DataShare gives you direct access to all the same data that you use on the SKUtrak website, but in a way that you can connect it directly to the specific tools that your company uses. Where you may be downloading data from the SKUtrak website and then incorporating it into your own report, you can connect that report directly to SKUtrak DataShare and refresh it immediately whenever you need to. Do away with "Download to CSV", save time & effort, and use SKUtrak data in whatever way works best for you.



DataShare provides a blank canvas full of possibilities of what can be achieved with SKUtrak data, but it can be daunting to get to grips with it on your own. This is exactly where the **Enoua DataShare Discovery** helps out. Enoua brings the knowledge and practical experience of how DataShare can be deployed, along with technical expertise of how to achieve it. Through discussions with your key business users, Enoua builds a picture of where SKUtrak data fits into your business and how it can be used.

Enoua provides the DataShare Discovery as a no-obligation free-of-charge engagement. All we ask, is some of your time. In return, Enoua provides you a report detailing our findings, with a personalized roadmap of actions and guidance on how to successfully deploy SKUtrak DataShare in your business, and the business benefits it will bring. From immediate practical solutions, through to the art-of-the-possible ideas, Enoua will help you see clearly what can be done and how to do it.



Contact Enoua, *let us get your data working*



help@enoua.co.uk